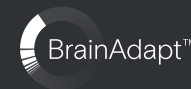


EPOS



IMPACT 1000 Series

IMPACT 1000 is designed for the New Open Office environment. Built on EPOS BrainAdapt™ technology to reduce brain fatigue with adaptive ANC and industry-leading voice pickup powered by EPOS AI™, making sure you're getting your message through.



red dot winner 2023



We are rebranding from EPOS | SENNHEISER to EPOS branding on our products. During the transition period the same product may exist in both versions



Key Features

Stay comfortable throughout the day

Lightweight design, soft breathable cushions, and headband padding allow for all-day wearing comfort in the open office.

Protect your brain in the open office

Hybrid adaptive ANC effectively shuts down noise and helps your brain focus – even in busy open office environments.

Industry-leading voice pickup for focused conversations

Adaptive microphone technology powered by EPOS AI™ makes sure you're getting your message through.

A new market standard for open office headsets

Experience a superior open office headset with super wideband and stereo sound. Meets Microsoft Teams Open Office requirements.

Experience true convenience

Wireless charging stand and smart features make using the headset truly intuitive and hassle-free.

See more at eposaudio.com/impact-1000

What's in the Box

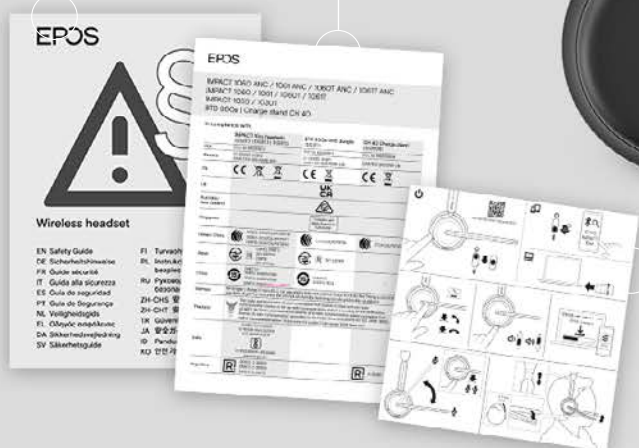
Soft Carry Pouch

BTD 800a Dongle



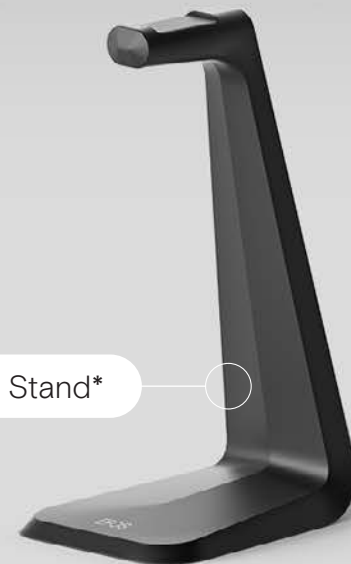
Safety Guide

Compliance Sheet



Quick Guide

CH 40 Charging Stand*



IMPACT 1000



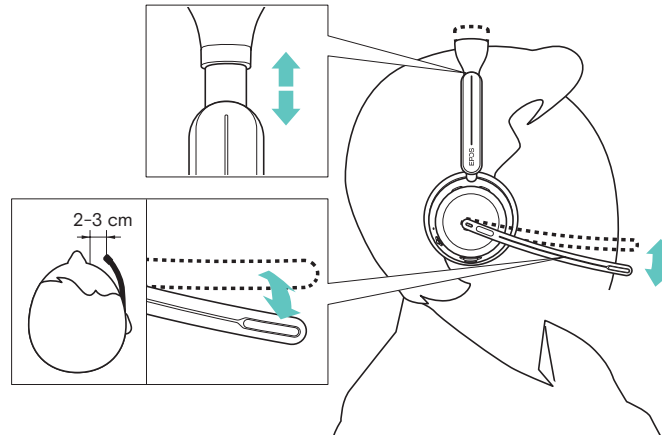
USB-C to USB-C Cable



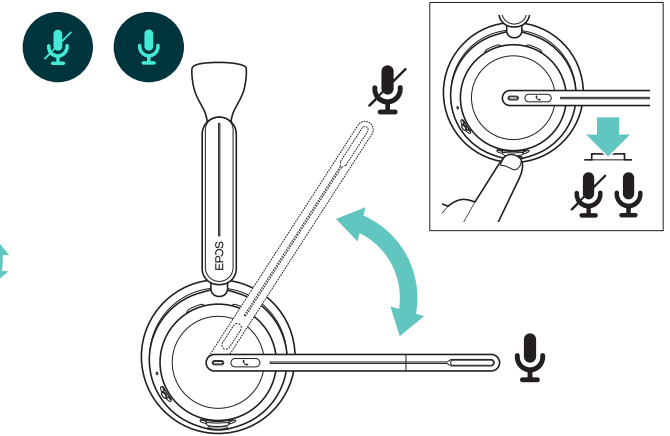
* Included in 1061, 1061T, 1061 ANC, 1061T ANC

How to Use the IMPACT 1000

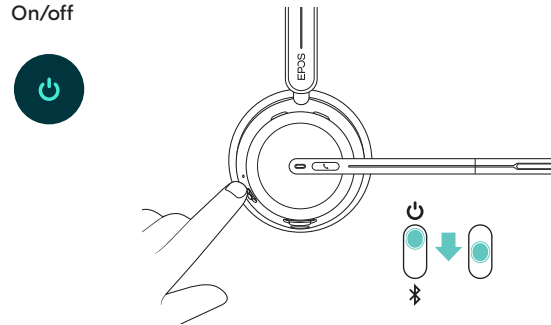
Adjusting and wearing the headset



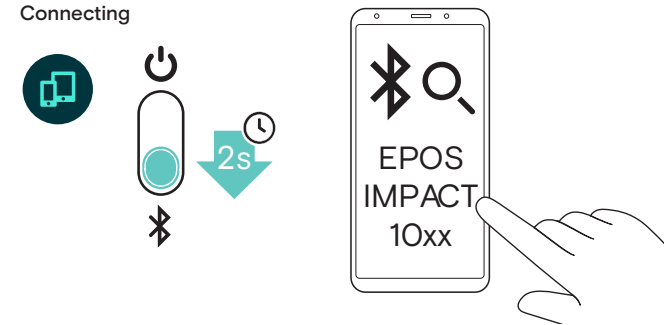
Mute/unmute



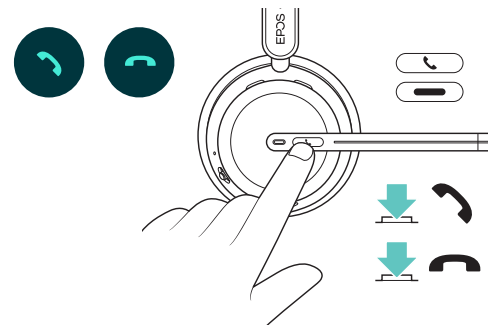
On/off



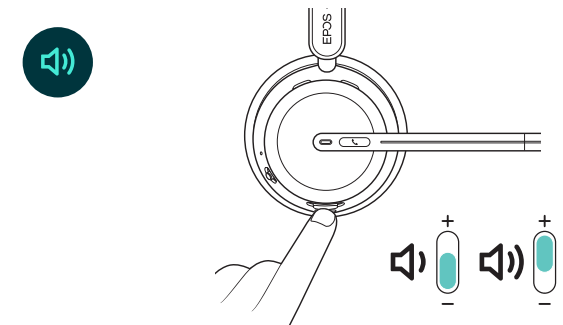
Connecting



Accept/end a call



Adjusting the volume



Additional benefits & features



Superior EPOS sound

Super wideband audio and stereo sound deliver clear speech in noisy open offices



Triple connectivity

Stay connected wirelessly with up to three devices at the same time



Wireless charging stand

Charge your headset easily without the hassle of wires and plugs



EPOS BrainAdapt™ technology

Better focus for both sides via ANC, EPOS AI™, and industry-leading voice pick-up



TalkThrough

Communicate easily with in-office colleagues without removing the headset



Smart features

Initiate, end, and mute calls by moving the boom arm or taking the headset on/off



Adaptive digital microphones

Adaptive microphone technology delivers industry-leading voice pickup



360-degree busylight

Intuitive busylight clearly signals when you're on call and not to be disturbed



Convenient carry pouch

Let's you easily carry the headset between your work and home office

Product data

1/3

General

| | |
|----------------|--|
| Wearing style | Headband -single and double-sided variants |
| Headset weight | Double-sided with ANC: 181 g / 6.38 oz Double-sided: 171 g / 6.03 oz Single-sided: 114 g / 4.02 oz |
| Connectivity | Bluetooth® 5.3, USB-C to USB-C cable, USB-A dongle |
| Warranty | 2 years |

Audio

| | |
|--|-----------------------|
| Speaker frequency response | 20 Hz – 20 KHz |
| Microphone type | 4 digital MEMS |
| Microphone frequency response | 100 Hz – 16 KHz |
| Active Noise Cancellation | Yes. Hybrid, Adaptive |
| Bandwidth in call mode (Speaker + Mic) | Super Wideband |

Product data

2/3

Products variants

| |
|--------------------------------------|
| IMPACT 1030/1030T |
| IMPACT 1060/1060 ANC/1060T/1060T ANC |
| IMPACT 1061/1061T/1061 ANC/1061T ANC |

Software

| |
|--|
| EPOS devices can be managed with following Software solutions: |
| EPOS Connect |
| EPOS Manager |

What's in the box

| |
|---|
| Single-sided headset, soft carry pouch, Bluetooth® USB dongle (BTD 800a), USB-C Cable (1.2m), Safety & Compliance sheet |
| Double-sided headset, soft carry pouch, Bluetooth® USB dongle (BTD 800a), USB-C Cable (1.2m), Safety & Compliance sheet. |
| Double-sided headset, soft carry pouch, Bluetooth® USB dongle (BTD 800a), USB-C Cable (1.2m), Safety & Compliance sheet. Wireless charging stand (CH 40). |
| Conduct firmware updates and configure headsets for personal audio preferences. EPOS Connect works for Windows, Mac® and VDI/Thin client environments: eposaudio.com/software-epos-connect |
| Manage, update and configure EPOS audio devices from any location. For both cloud and on-premises solutions: eposaudio.com/software-epos-manager |

Product data

3/3

| Product | Connects to | Certifications | EAN code | UPC code |
|--------------------------------------|---------------------------------|---|------------------|-----------------|
| IMPACT 1060 ANC Art. no. 1001130 | Softphone/PC and mobile devices | Optimized for UC. Certified for Google Meet | 57 14708 00932 0 | 8 40064 40932 2 |
| IMPACT 1061 ANC Art. no. 1001131 | Softphone/PC and mobile devices | Optimized for UC. Certified for Google Meet | 57 14708 00933 7 | 8 40064 40933 9 |
| IMPACT 1030 Art. no. 1001132 | Softphone/PC and mobile devices | Optimized for UC. Certified for Google Meet | 57 14708 00934 4 | 8 40064 40934 6 |
| IMPACT 1060 Art. no. 1001134 | Softphone/PC and mobile devices | Optimized for UC. Certified for Google Meet | 57 14708 00936 8 | 8 40064 40936 0 |
| IMPACT 1061 Art. no. 1001135 | Softphone/PC and mobile devices | Optimized for UC. Certified for Google Meet | 57 14708 00937 5 | 8 40064 40937 7 |
| IMPACT 1060T ANC Art. no. 1001136 | Softphone/PC and mobile devices | Optimized for UC. Certified for Microsoft Teams | 57 14708 00938 2 | 8 40064 40938 4 |
| IMPACT 1030T Art. no. 1001137 | Softphone/PC and mobile devices | Optimized for UC. Certified for Microsoft Teams | 57 14708 00939 9 | 8 40064 40939 1 |
| IMPACT 1060T Art. no. 1001138 | Softphone/PC and mobile devices | Optimized for UC. Certified for Microsoft Teams | 57 14708 00940 5 | 8 40064 40940 7 |
| IMPACT 1061T ANC Art. no. 1001171 | Softphone/PC and mobile devices | Optimized for UC. Certified for Microsoft Teams | 57 14708 00975 7 | 8 40064 40975 9 |
| IMPACT 1061T Art. no. 1001173 | Softphone/PC and mobile devices | Optimized for UC. Certified for Microsoft Teams | 57 14708 00977 1 | 8 40064 40977 3 |

Spare parts

1/1

| Product | Art. no. | Description | EAN code | UPC code |
|---------|----------|--------------------------------|------------------|-----------------|
| CH 40 | 1001139 | Wireless Charging stand. USB C | 57 14708 00941 2 | 8 40064 40941 4 |

Appendix

1/1

Additional product data

EPOS ActiveGard® technology

Protects users against acoustic injury caused by sudden sound burst on the line

EU Noise at Work limiter*

Enhanced audio protection preventing listening fatigue, average 85 dB over a workday

EPOS Voice™ technology

For a clear and natural listening experience

Talk time (hours)

ANC ON: 19 hours
ANC Off: 20 hours

Charging time

With cable: 1.5 hours
Wireless charging: 2.5 hours

Standby time

ANC ON: 50 hours
ANC OFF: 300 hours

Wireless Range

Up to 30 m / 100 ft

Multipoint Connectivity

Triple Connectivity

Busylight

Yes, 360-degree

* In compliance with EU Noise at Work legislation (Directive 2003/10/EC), that sets limits for two types of noise in the workplace: Acoustic burst and Sustained noise.



TEL: 0800-800-945 FAX: 02-8935-2108

E-mail: service@truesun.com.tw

總公司: 新北市淡水區民權路187巷12號23樓

台北辦公室: 台北市中山區龍江路415巷48號